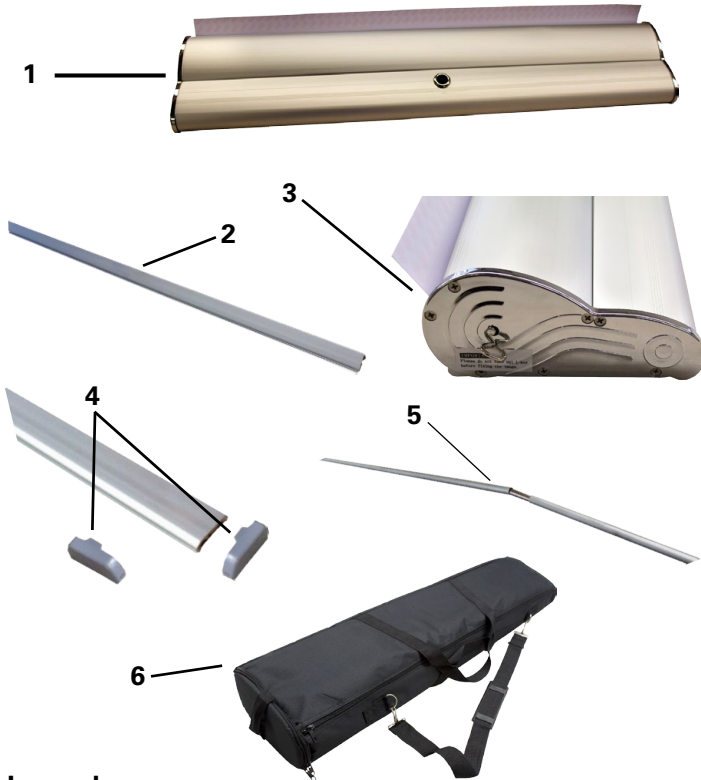


DISPLAYONE® Messenger•RTR

KAL IDEAL 3378 INSTRUCTIONS



Legend

- | | |
|---------------------|-----------------------|
| 1. Base Unit | 4. Snap Rail End Caps |
| 2. Banner Snap Rail | 5. Vertical Pole |
| 3. Base with Pin | 6. Carry Case |

DO NOT REMOVE PIN UNTIL DIRECTED (STEP 6)

Banner Installation

1. Remove both snap rail end caps.



Banner Installation... continued

2. Insert the top edge of the banner into the groove of the banner snap rail and snap it shut.



3. Replace end caps



4. Flip the base unit upside down, align the banner with printed side up. Remove tape strip to expose adhesive.



5. Press the banner onto the adhesive moving up the edge as you pull away the protective paper strip. Press evenly and firmly.



Banner Installation... continued

6. While **holding** the banner which is secured to the base unit, slowly remove the pin from the base unit. **TENSION IS ACTIVATED. DON'T LET GO OF THE BANNER!**



7. Slowly and carefully allow the banner to roll into the base. **DON'T** allow the banner to retract on its own by letting go.



8. Flip the unit over. You are now ready for display set up.

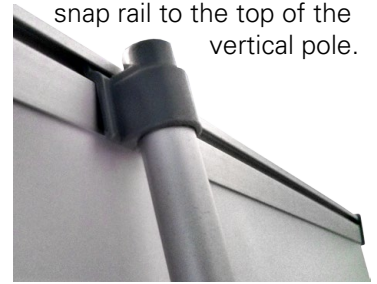


Display Set-Up

9. Assemble vertical pole and place into the base after you place the unit in desired location.



10. As you hold the vertical pole, carefully lift the banner snap roll up. Tilt the base unit back and attach the banner snap rail to the top of the vertical pole.



Place all product parts into soft carry case and store in a cool dry location. To clean, wipe with damp cloth.

