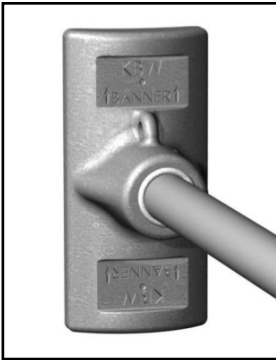


KBW BannerFlex® JR Bracket



The KBW BannerFlex JR bracket was specifically designed for use with smaller banners while maintaining comparative strength to our line of other BannerFlex brackets. The one-piece BannerFlex JR is perfect for banners of 24" x 48" or smaller. Screw-gear banding allows for ease of installation and adjustment. BannerFlex JR works exceptionally well on smaller diameter or decorative light poles and is available with permanent or removable fiberglass arms.

Product Testing Program

KBW by Consort utilizes full-scale wind tunnel and material testing facilities along with computer-aided design programs to develop and affirm our product components, capabilities, features and warranties. For specific engineering data, including our BannerFlex Wind Force Calculator, visit us at www.kalamazoobanner.com or contact your KBW/Consort Sales Representative at (800) 525-6424.

FEATURES AND BENEFITS



KBW BannerFlex JR Main Casting

FEATURES	BENEFITS
356T6 Heat-Treated Cast Aluminum	<ul style="list-style-type: none"> • Superior strength and durability • Corrosion resistant • Accepts powder coating
Eyelet Included in Casting	<ul style="list-style-type: none"> • Allows for wire ties to be utilized through both the banner grommet and casting to secure banner • Added security from loss or theft
Banding Channels	<ul style="list-style-type: none"> • Easily allows positioning of up to 3/4" wide screw-gear bands to fasten casting to pole
Removable Arm Availability	<ul style="list-style-type: none"> • Allows quick change of banners for seasons and events • Less obtrusive when banners are not in use

KBW BannerFlex Standard 13/16" Round Fiberglass Arm

FEATURES	BENEFITS
Pultruded Fiberglass Arm	<ul style="list-style-type: none"> • Provides flexibility while maintaining strength • Increases banner longevity

